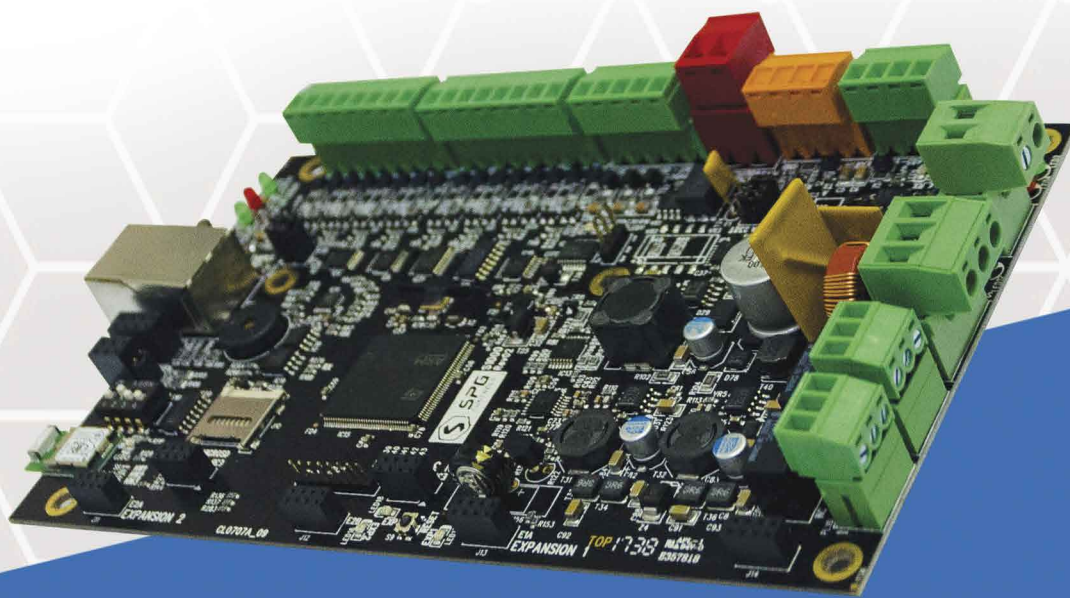


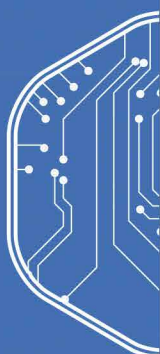
SPG S1000

Smart Controller



Feel secure anywhere, anytime with the S1000 Smart Controller. Manage Access Control, Alarms and Building Management functions remotely and securely when connected to the ARCO Platform.

Robust and compact, the S1000 Smart Controller has a built-in battery charger, wide supply range and 4G capability. It can handle temperatures up to 70°C, making it ideal in harsh, remote environments.



Standalone operation
Capability



Can weather harsh
Environments



Digital and analog inputs
software configurable



Built-in battery charging
for SLA or Li-ion batteries



IoT Smart Devices



BLE local setup and control



WAN/LAN remote operation



4G capable



Modular configuration
using expansion cards
and remote slave S1000s



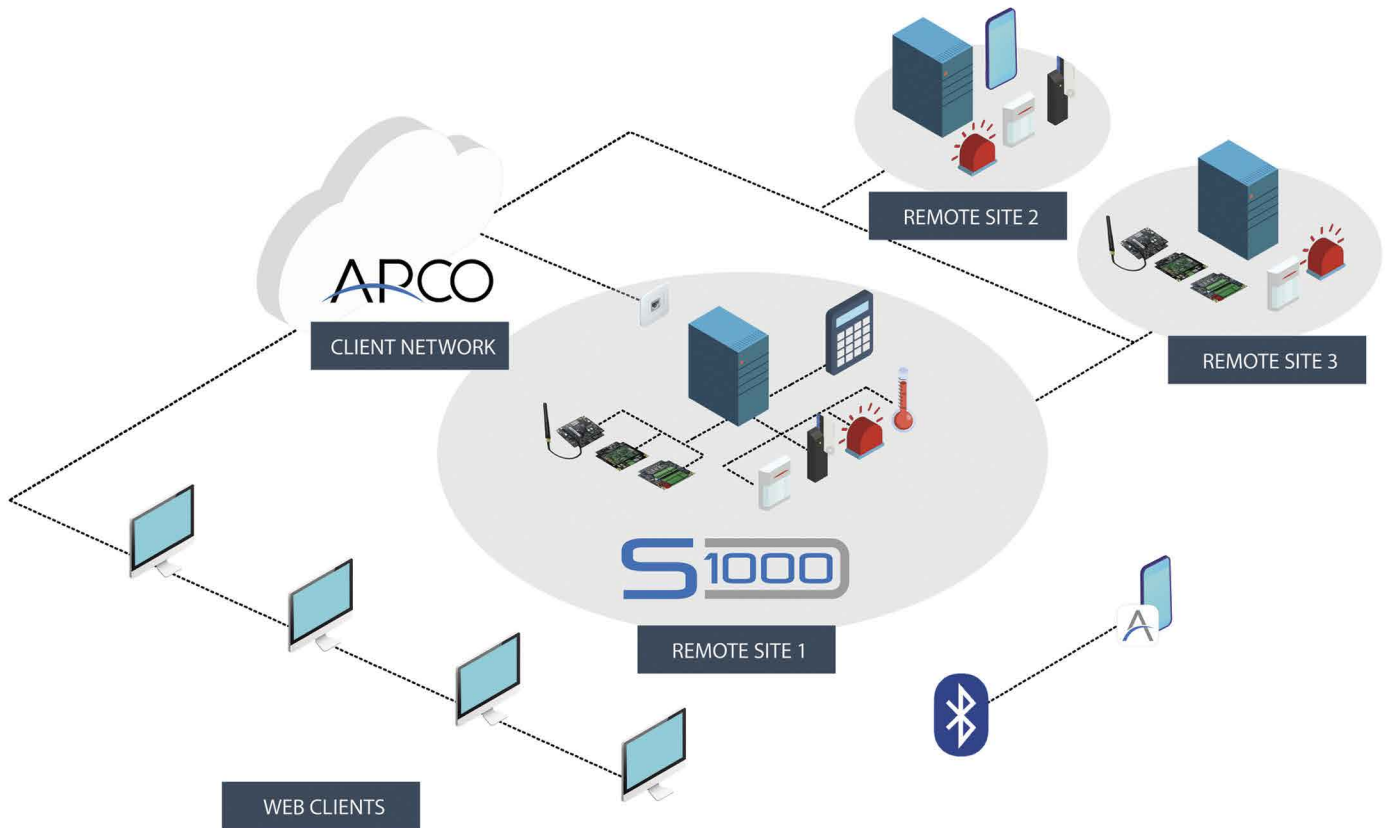
Sensor monitoring

TECHNICAL SPECIFICATIONS

Database	<ul style="list-style-type: none"> • Card/user capacity: 1000 default (500,000 with SD Card) • Transaction storage: 1000 default (50,000 with SD Card) • Holidays: 100 dates, 5 holiday types • Time Zones: 150
Onboard I/O	<ul style="list-style-type: none"> • Inputs - 8 Multi End-of-line monitored inputs or analogue 0-10V inputs (default 10K, programmable from 1K to 50K) • Outputs: 2 Relay NO/NC dry contact 0.5A@120VAC/1A@24VDC, 3 O/C 0-24V@250mA • Readers: 2 Wiegand D0/D1 (door contact, egress, door strike, green/red LED control, buzzer)
Alarm	<ul style="list-style-type: none"> • Inputs: 255 max • Outputs: 192 max • Intrusion Areas: 8 max • Alarm keypads: 8 max • Devices: 32 max (i.e. 16 per bus) • Tamper Input (top and bottom)
Access Control	<ul style="list-style-type: none"> • Card formats: Up to 128-bit cards • Readers: 32 • Doors: 16
Macros	<ul style="list-style-type: none"> • Up to 1000
Environment	<ul style="list-style-type: none"> • -10 to +70°C (14 to 122°F) 95% +/- 5% relative humidity (non-condensing) @30°C (86°F)
Communication	<ul style="list-style-type: none"> • RJ45 Ethernet Port 10/100 BaseT • RS485 multidrop OSDP port Isolated RS232/RS485 configurable port for 3rd party devices • BLE 4.2
Supported Expansion Modules	<ul style="list-style-type: none"> • SD Card Slot: Micro SD Slot used to increase the number of users and transactions. • Expansion Ports: 3 suitable for any S1000 expansion modules.
Power Supply and Battery	<ul style="list-style-type: none"> • Battery voltage, current and temperature monitoring • Onboard Battery Charger up to 1A supports SLA or Li-ion batteries • Auxiliary output supply 1A @10-16Vdc
Status Indicators	<ul style="list-style-type: none"> • Relay Outputs, Ethernet (speed and link status), RS-485 (TX, RX), RS232 (TX, RX), DC power, Battery, status
Dimensions	<ul style="list-style-type: none"> • (165mm W x 100mm H x 40mm D) (6.3" x 3.9" x 1.6")
Weight	<ul style="list-style-type: none"> • 150g (5.3oz)
Processor Memory	<ul style="list-style-type: none"> • ARM 7 32 bit @ 200MHz • 1Mbyte SRAM • 2Mbyte Program flash • 4Mbyte Data flash • 512K EEPROM
Power Input	<ul style="list-style-type: none"> • 10-60Vdc
Power Consumption	<ul style="list-style-type: none"> • Typically 120mA @ 12Vdc
Power Protection	<ul style="list-style-type: none"> • Resettable fuse 3.0A
Dual Flash Memory	<ul style="list-style-type: none"> • This allows two (2) versions of firmware to be stored and enables remote upgrades to be performed



ARCO and S1000 Overview



Ordering Information

Part Number	Product Code	Description
200001	S1000-PCB	S1000 PCB Board only
200008	S1000-PCB-KIT	S1000 PCB Board plus mounting kit for a small enclosure
200020	S1000-MENC-2P	S1000 Board in a Standard SPG small metal Enclosure with 2.5A, 240V-24V DC Supply
200021	S1000-MENCL-2P	S1000 Board in a Standard SPG large metal Enclosure with 2.5A, 240V-24V DC Supply
200022	S1000-MENCL-5P	S1000 Board in a Standard SPG large metal Enclosure with 5A, 240V-24V DC Supply
200009	S1000-DEMO	S1000 in a plastic enclosure with keypad, IO hardware and 2.5A supply