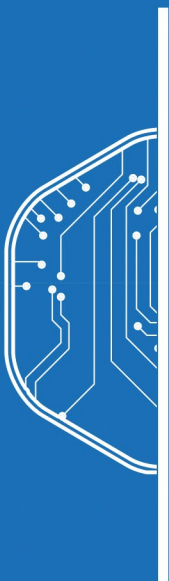


# SPG All Weather SLIMLINE Reader



Available with different technologies:

- 125kHz Prox
- 13.56MHz Mifare, Desfire, Legic



RS485 OSDP or Wiegand



Card reader function supported



Reverse power protection



OSDP encryption supported



Design with End User  
Logo is available



LED Backlight



All weather-proof design  
with IP65 certificate

## Technical Specifications

Typical Read Range	3-8 cm (Base on Different Technology)
Reader Standard Output	RS485 OSDP (Wiegand Optional)
Wiring Distance	150m (22 AWG with Shielded Cable)
Operating Voltage	10 - 15VDC
Operating Current	150mA (max)
Operating Temperature	-10°C to +70°C
Exterior Dimension	150 x 53 x 25mm
Case Material	PC + ABS
Standard Colour	Black
Operating Humidity	10% - 90%
Weight	180g



Industry  
Canada



## Ordering Information

Part Number	Product Code	Description
300125	SD1-STX-PRX-B	Slimline Low-Frequency OSDP Reader. Can read HID Prox and EM card.
300132	SD1-STX-MFRP-B	Slimline Dual Tech OSDP Reader. Can read HIDProx, Mifare, Desifre and iClass card.
300133	SD1-STXW-PRX-B	Slimline Low-Frequency Wiegand Reader. Can read HID Prox and EM card.
300135	SD1-STXW-MFRP-B	Slimline Dual Tech Wiegand Reader. Can read HIDProx, Mifare, Desifre and iClass card.