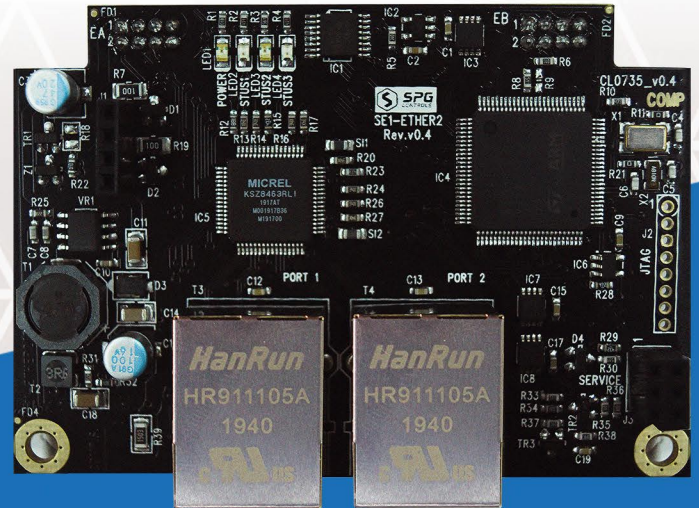
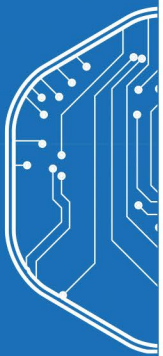


# SPG

## Dual Ethernet Expansion Card



The SPG Dual Ethernet expansion card provides additional Ethernet port for the S1000 Smart Controller using any of the three expansion slots. The expansion card also supports a three-port switch capability allowing the S1000 Controller to occupy one port automatically and two ports are available for other network-connected devices or routers.



10/100 TCP/IP ethernet port



SSL/TLS encryption support



Supports redundancy for S1000 panel to ARCO



Auto card detection on S1000



2 Additional 10/100 ethernet ports

## Technical Specifications

Protocols	ARCO TCP/IP using SSL security
Physical	10/100 Full duplex
Temperature	-10°C to 70°C
Humidity	5%(0°C) to 95%(40°C)
Power Consumption	60mA @ 12VDC
Dimensions	80mm x 56mm
Weight	50g



## Ordering Information

Part Number	Product Code	Description
200106	SE1-ETHER2-PCB	1/100 Ethernet Expansion module