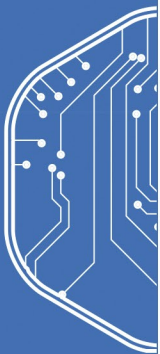


# ARCO App



Make installation and operation of your controller quick and easy using the ARCO App. This provides network settings to establish remote communications to ARCO Platform, input and output testing both locally and end to end.



Supports BLE 4.2



Android Compatible



iOS Compatible

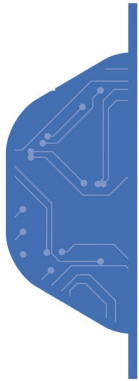










Free Download



No Setup PC Required

**Features**



-  Secure authentication layer for login
-  Controller can disable BLE pairing
-  Allows for easy commissioning of panel
-  Can update firmware via the app
-  Dashboard for diagnostics and testing
-  End to end verification testing of alarms
-  Can arm and disarm the panel
-  Can view event history (up to the last 500 events)

**ARCO and S1000 Overview**

