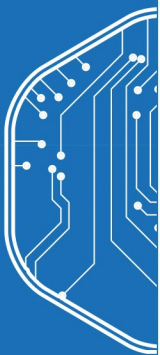


SPG 3D Biometric Reader



SPG 3D Biometric Reader uses next-generation facial recognition and body temperature detection technology. This ensures absolute no surface contact access using high-precision temperature detection and mask-wearing users. Enhance user access security through face detection, face tracking and face contrast, and human body temperature measurements. Connects via the encrypted OSDP bus or Wiegand to the S1000 Smart Controller.



Accurate Non-contact
Temperature Measurement



Face Recognition with
Mask Occlusion



Fast Recognition Speed



High-Temperature Alarm Display



Records Export



Tamper Protection

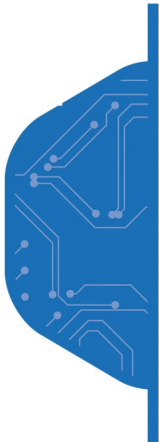


Multi-Factor Authentication



Audio Prompts

Benefits



Comparison of Facial, Card and PIN combination authentication



Record body temperature and face mask presence on prox



Store Up to 50,000 facial characteristic templates



Face mask detection alerts



Support off-line synchronization of the facial database (via TCP/IP)



Store up to 100,000 off-line events

System Requirements

Facial Recognition

Technology	Dual Lens Anti-Spoofing
Dynamic Recognition	Supports 50,000 human faces
Recognition Accuracy	≥ 99%
Recognition Time	< 200ms/person
Recognition Distance	0.5m - 4m

Temperature Sensor

Technology	Vanadium Oxide Uncooled Sensor
Measurement Range	30°C - 40°C
Detection Distance	0.3 - 2m
Temperature Accuracy	±0.5°C
Field of View	120 × 160

Hardware

Display	7 inch Touch Screen
Communications	TCP/IP
Power Supply	Input: 100V-240V, Output: DC 12V / 2A
Operating Temperature	0°C - 50°C
Operating Humidity	10% - 90%
Dimension	283mm x 117mm x 37mm



Description

Part Number	Product Code	Description
300145	SD1-FRT-HIK	3D Biometric Reader