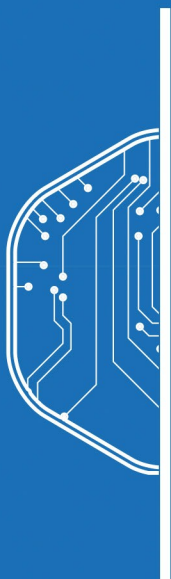




Facial Recognition Reader



SPG Facial Recognition Reader uses the latest technology for biometric access. Enhance security access control using a built-in card reader or PIN code for dual-factor authentication. Connects via the encrypted OSDP bus or Wiegand to the S1000 Smart Controller.



Dual camera



LCD Touch Screen



Support IR light compensation



Scramble Keypad



Dual-factor Authentication



Supports fire alarm input and indication of Escape Route

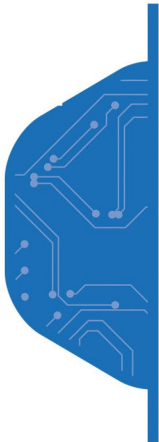


Support search function (personal information, off-line events)



Wiegand & RS485 (OSDP)

Features



Comparison of Facial, Card and PIN combination authentication



Store Up to 20,000 facial characteristic templates



Facial Recognition speed <0.5s & accuracy ≥ 99.8%



Facial Recognition distance is 0.3m ~ 1.5m



Liveness detection: Effectively prevents the use of photos or videos for authentication



Support Off-line synchronization of the facial database (via TCP/IP).



Store up to 20,000 off-line events;



Increases the security level by saving the document image in a database

System Requirements

Reader Technology	125KHz, ISO14443A and ISO15693
Card Format	Support different formats
Access Modes	Facial / Facial + PIN / Facial + Card / PIN + Facial / Card + Facial / Card + PIN
Programming Mode	Login Card or Password
Reader Output	Wiegand or RS485 (OSDP)
Hardware Output	Relay output 12Vdc@1A
Communication	Ethernet Port
RAM	DDR3 2G
Flash	16GB
Touch Screen	5" LCD screen, Resolution: 720X1280
Light Compensation	Infra-red wave for IR camera
Recognition Distance	Facial Recognition distance is around 0.3m to 1.5m
Camera	Dual camera : IR+RGB
Temperature	-20°C to 55°C
Humidity	5%(0°C) to 95%(40°C)
Power Consumption	2A @ 15VDC
Dimension	188mm x 106mm x 31mm

Ordering Information

Part Number	Product Code	Description
300139	SD1-FR-MFRP-B	Facial Recognition Reader