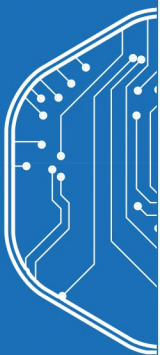


SPG Mini Camera



The SPG Mini Camera is a compact digital camera designed to enhance security even in harsh environments. Ideal for mounting inside enclosures, racks or any location where non-continuous monitoring is more economical. Connected via the encrypted OSDP bus of the S1000 Smart Controller, the Mini Camera captures images at high speed and then stored locally on the SD card.

Images can be uploaded to ARCO Platform either by using a serial bus from S1000 Smart Controller or by directly connecting to a WIFI router. Up to four Mini Cameras can be supported on one S1000 Smart Controller.



Compact and affordable



Robust design



Captures high quality images



5MP camera images



IR night vision



WIFI or Serial bus interface



Up to 4 cameras per controller

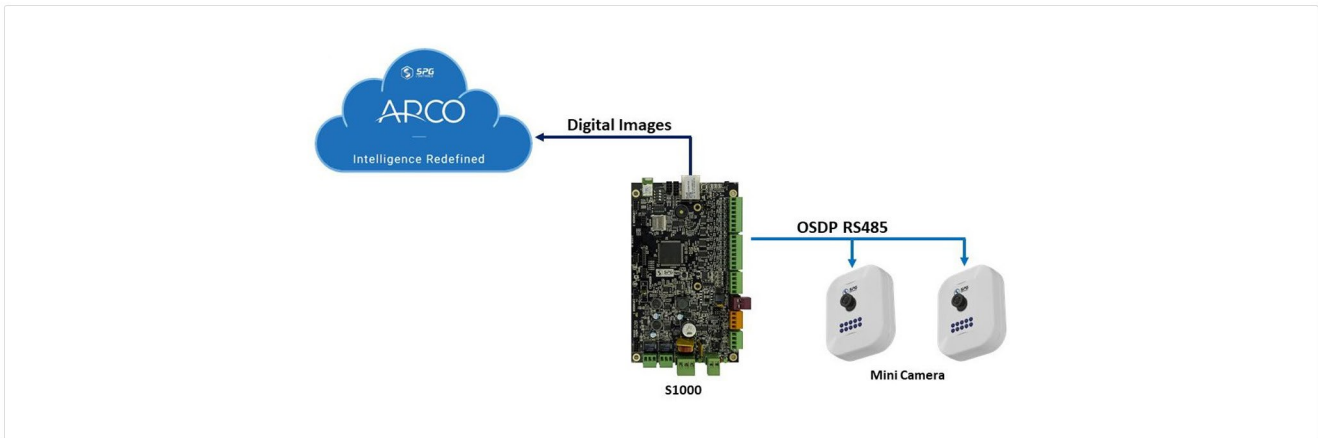


Requires low bandwidth to upload images

Technical Specifications

Camera	2MP or 5MP wide angle
Infrared Detector	850nm 10 LEDs 90 Degree Wide Angle For night vision
Resolution	QVGA, VGA, SVGA, SXGA, UXGA, QXGA
Capture Rate	2 FPS local capture rate
Communications	RS485 or WIFI
Temperature	-10°C to 70°C
Humidity	5%(0°C) to 95%(40°C)
Power Consumption	50mA @ 12VDC
Dimensions	60mm x 40mm x 250mm
Weight	40g
Enclosure	Plastic with mounting kit

System Overview



Ordering Information

Part Number	Product Code	Description
200140	SD1-MINICAM-PENC	SPG Mini Camera