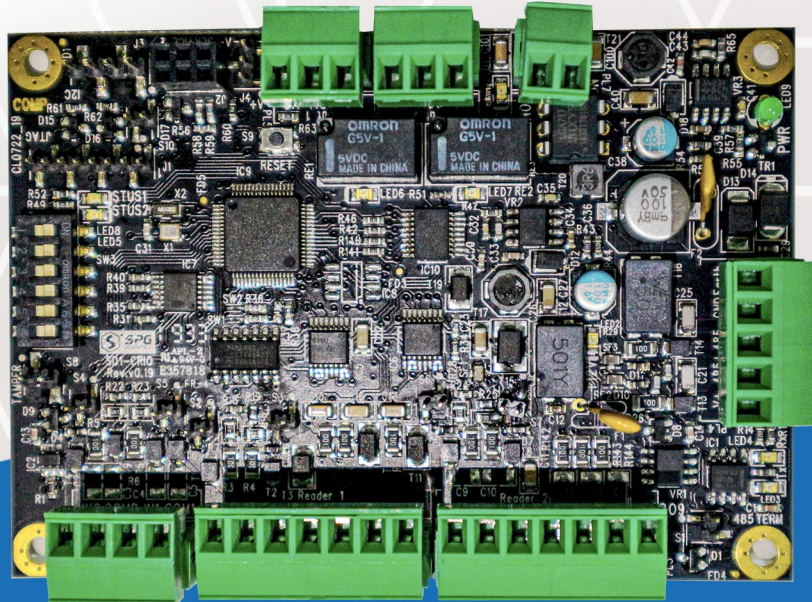
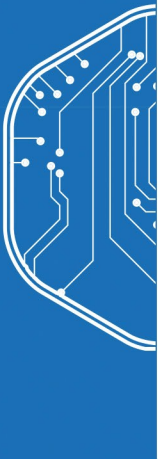


SPG

Card Reader Interface Two Door Controller



The SPG two door controller is connected via the encrypted OSDP bus. Each bus can connect up to 16 two door controllers. That expands the S1000 card access capabilities up to 16 doors or 32 readers. The board has dual Wiegand built-in with LEDs and buzzer connections, 2 normal relays, and 1 solid state relay which provides unlimited activation of strikes. There are 2 digital inputs. Each input is configurable to perform multiple functions, such as Door contact, Egress and Break glass with same wiring. Dual flash memory provides operating redundancy, with no down time while upgrading new firmware. The two door controller also can be used as an I/O device. It provides 6 inputs, 3 relays and 6 open collector outputs. All inputs are configurable as either digital or analog inputs.



Supports In/Out reader



Solid state relay



Dual flash memory operating



Encrypted OSDP



Offline mode



Digital and analog inputs software configurable

Technical Specifications

Inputs	2 Analog or Digital multi end-of-line monitored (optional for 6 without using Wiegand inputs)
Tamper	1 x digital input for connecting tamper signal
Outputs	2 Relay NO/NC 1 A@ 24VDC, 6 O/C outputs and 1 x Solid State Relay 0-24V AC/DC @ 1A
Wiegand	2 x Data0/Data1 signals with optional pull-up
Power Supply	10-24V DC
Dual Flash Memory	Firmware updatable from master controller without losing door operation.
Degraded Mode Support	Continuous door transactions if disconnected from master controller: 1000 Users 1000 Transaction 24 Hours
Temperature	-1 0°c to 70°C
Humidity	5%(0°C) to 95%(40°C)
Power Consumption	50mA@ 12VDC all inputs terminated.
Dimensions	100mm x 70mm
Weight	70g



Ordering Information

Part Number	Product Code	Description
200120	SD1-CRIO-PCB	Card Reader Interface for 1 or 2 Doors, includes 2 Wiegand Reader interfaces, up to 4 Analog/Digital inputs, 2 Relays plus 1 solid state relay outputs
200121	SD1-CRIO-MENC	Card Reader Interface for 1 or 2 Doors, includes 2 Wiegand Reader interfaces, up to 4 Analog/Digital inputs, 2 Relays plus 1 solid state relay outputs in Metal Enclosure