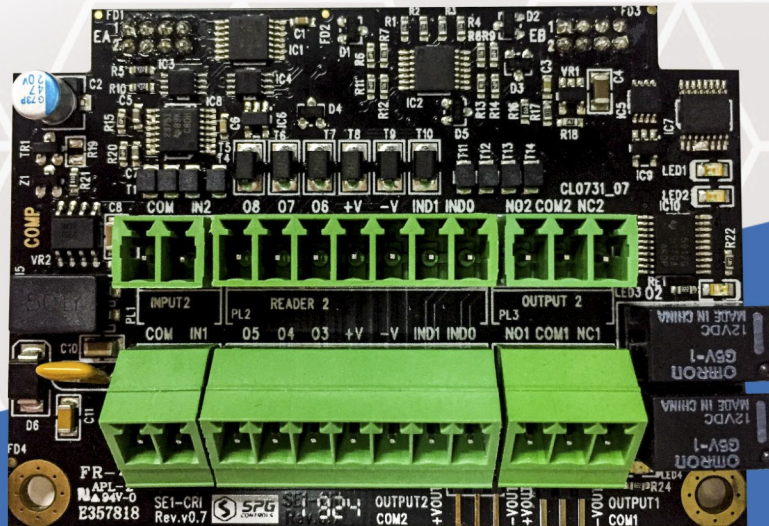
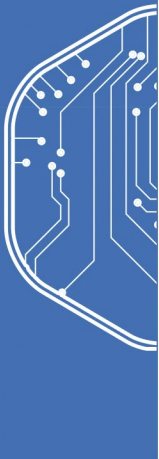


# SPG

## Card Reader Interface Expansion Card



The SPG Card Reader Expansion card provides an easy expansion for an S1000 Smart Controller, providing additional control of up to 2 doors. The board has built-in dual Wiegand reader support for In/Out readers on the door and has 2 relay outputs. There is also 2 additional digital or analogue inputs software configurable that can be used for Break glass and Door contact functions. Wiegand inputs can be software programmed to have a pullup resistor for situations where the Wiegand inputs are driven by a voltage.



Supports In/Out reader



Auto card detection on the S1000



Dual Wiegand support



Hot-swappable



Intelligent Door contact and Egress monitoring



Digital and analog inputs software configurable

## Technical Specifications

Inputs	2 Analog or Digital multi end-of-line monitored (0-10V) Optional for 6 without using Wiegand inputs
Outputs	2 Relay NO/NC 1 A@ 24VDC, 6 O/C outputs
Wiegand	2 x Data0/Data1 signals with optional pull-up
Temperature	-1 0°C to 70°C
Humidity	5%(0°C) to 95%(40°C)
Power Consumption	50mA@ 12VDC all inputs terminated.
Dimensions	80mm x 56mm
Weight	50g



## Ordering Information

Part Number	Product Code	Description
200105	SE1-CRI-PCB	S1000 compatible expansion Card Reader Interface for 1 or 2 Doors, includes 2 Wiegand Reader interfaces, up to 2 programmable Analog/Digital Inputs and 2 Relays