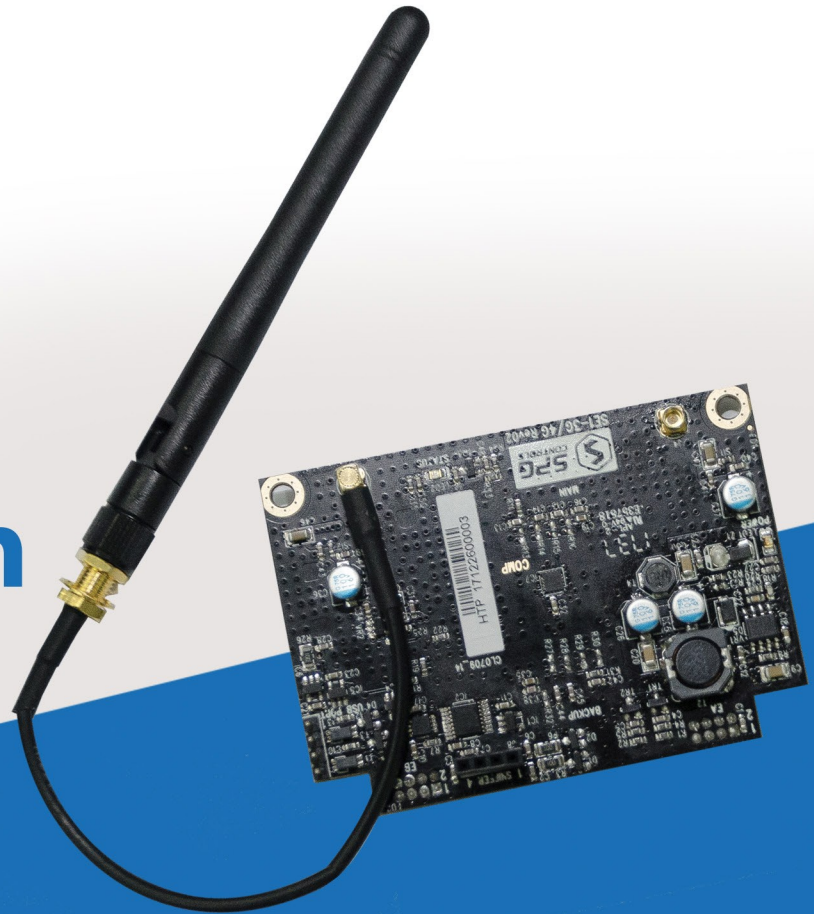
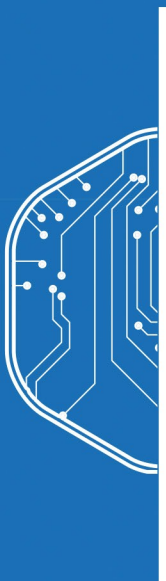


SPG Cellular + WIFI Expansion card



The SPG Cellular expansion card allows for 3 options - one option has 2G/3G/4G operation, the other includes WiFi support for both end node and hotspot operation, and the last one supports dual-mode Cat M1/NB1 (NB-IoT) capability. The card also supports dual SIM for additional redundancy. A wide range of modulation is supported.



Automatic fall-back
from 4G to 3G to GPRS



Optional WiFi hotspot
or device mode



2G GPRS, 3G and 4G
networks



Auto card detection
on S1000



Dual SIM auto detecting
best path



Supports GPS location



Supports LTE-CATM1 and
NB-IoT network connectivity



Anti-Jamming Detect

Technical Specifications

Model SE1-CELL-PCB and Model SE1-CELLWIFI-PCB:

Bands	2G B8(900MHz) B3(1800MHz) 3G B8(900MHz) B1(2100MHz) 4G B20(800MHz) B8(900MHz) B3(1800MHz) B7(2600MHz) B1(2100MHz)
-------	---

Model SE1-CELL-PCB-L:

Bands	2G B8(900MHz) B3(1800MHz) 3G B8(900MHz) B1(2100MHz) 4G B20(800MHz) B8(900MHz) B3(1800MHz) B7(2600MHz) B1(2100MHz)
Wifi	IEEE 802.11 b/g/n

Model SE1-CELL-PCB-L

Bands	2G B5(850MHz) B8(900MHz) B3(1800MHz) B2(1900MHz) 4G B12/13(700MHz) B19/20(800MHz) B5(850MHz) B8(900MHz) B3(1800MHz)- B1(2100MHz)
Data	Cat-M1 and NB-IoT
GNSS	GPS, GLONASS, Beidou, Galileo

All Models

Protocols	ARCO TCP/IP using SSL security
Data rate	up to 72Mbps (802.11n)
Temperature	-10°C to 70°C
Humidity	5%(0°C) to 95%(40°C)
Power Consumption	Idle 25mA @ 12VDC / Peak 450mA @ 12VDC
Dimensions	80mm x 56mm
Weight	50g



Ordering Information

Part Number	Product Code	Description
200102	SE1-CELL-PCB	2G/3G/4G Cellular backup card with antenna
200103	SE1-CELLWIFI-PCB	2G/3G/4G Cellular backup card with WiFi support and dual antennas
200152	SE1-CELL-PCB-L	2G/4G Cellular backup card with GNSS support and antenna